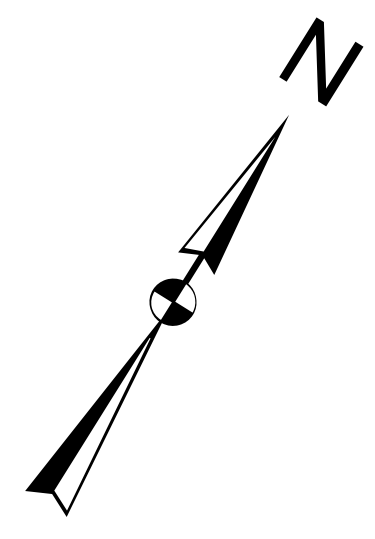
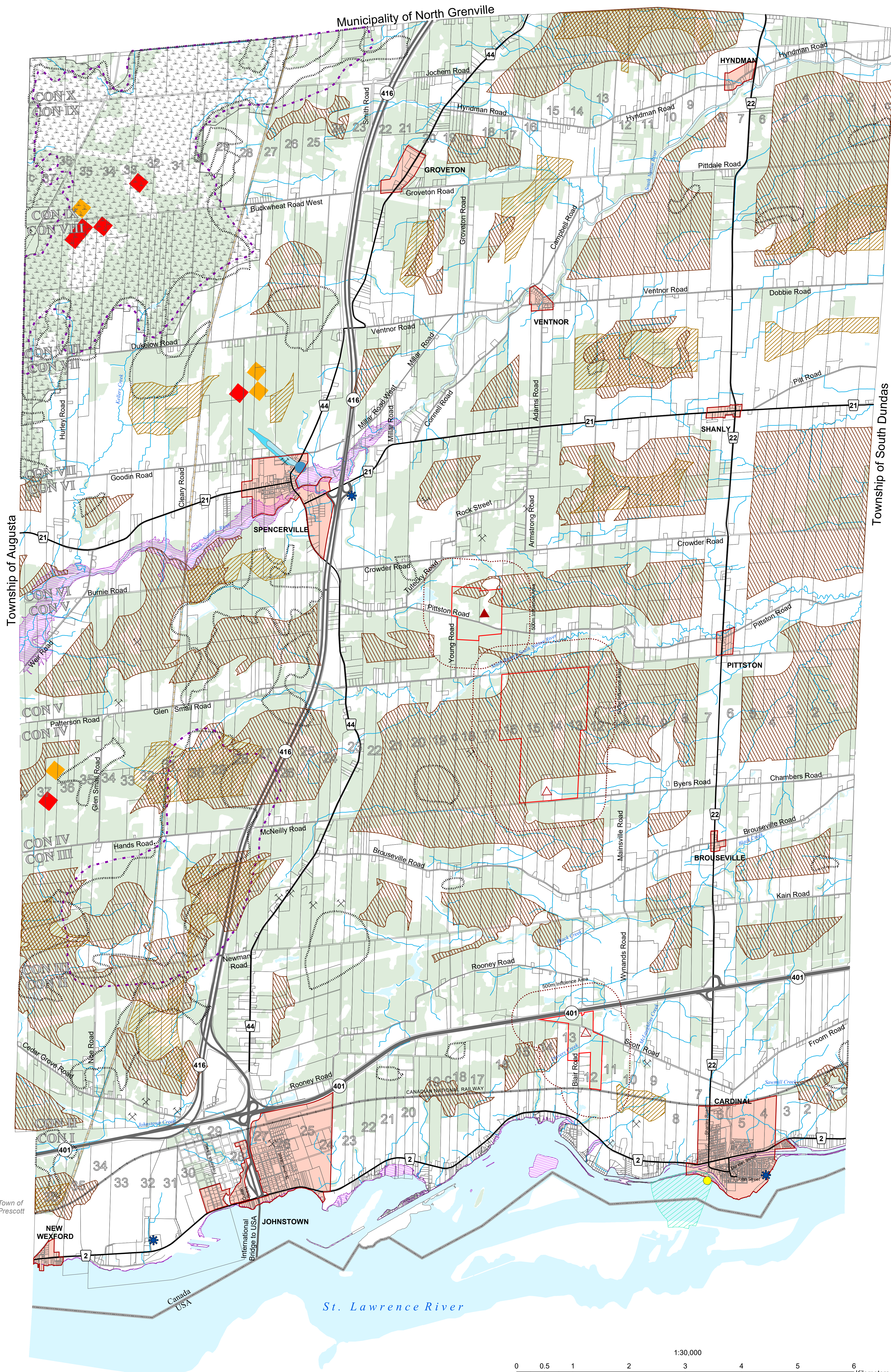


OFFICIAL PLAN  
SCHEDULE B  
DEVELOPMENT  
CONSTRAINTS



CONSTRAINTS

Natural Heritage Constraints

- Significant Woodlands
- ANSI
- Significant Wildlife

Hazard Constraints

- Flood Plain
- Organic Soils
- Abandoned Mines
- Open Waste Disposal
- Closed Waste Disposal
- Extreme Wildland Fire Potential
- High Wildland Fire Potential

Cardinal Intake Protection Zones

- Surface Water Intake
- IPZ-1

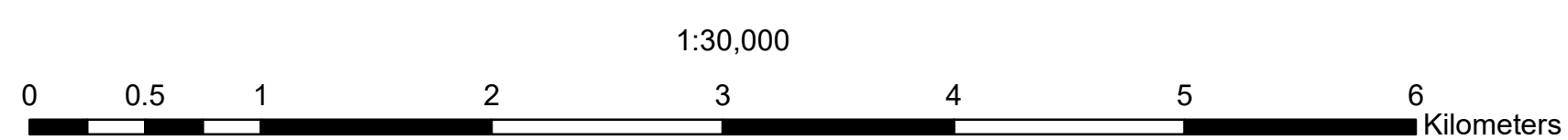
Spencerville Wellhead Protection Area Zones

- WHPA-A
- WHPA-B
- WHPA-C

- Municipal Sewage Treatment Facility

Mineral Aggregate Reserves

- Bedrock Resources
- Sand & Gravel Resources
- Settlement Area



NOTE: FOR LANDS ALONG THE ST. LAWRENCE RIVER, THE FLOODPLAIN RANGES FROM 75.6 MASL AT THE WEST END OF THE TOWNSHIP TO 75.3 MASL AT THE EAST END. FOR DETAILED INFORMATION WITH RESPECT TO 1:100YR FLOOD PLAIN LIMITS, SEE THE RELEVANT SECTIONS OF THE OFFICIAL PLAN & CONSULT DIRECTLY WITH THE SOUTH NATION CONSERVATION AUTHORITY.

ISSUE DATE: NOVEMBER, 2019  
OFFICE CONSOLIDATION: APRIL, 2024



THIS PLAN IS BASED UPON INFORMATION OBTAINED IN JUNE 2019 THROUGH A DIGITAL DATA RELEASE AGREEMENT WITH THE UNITED COUNTIES OF LEEDS & GRENVILLE AND INCLUDES DATA FROM THE PROVINCE OF ONTARIO'S ONTARIO GEOSPATIAL DATA EXCHANGE DATABASE (LAND INFORMATION ONTARIO), MUNICIPAL PROPERTY ASSESSMENT CORPORATION AND TERANEK INC. AND ALSO INCLUDES DATA OWNED AND/OR USED UNDER AGREEMENTS WITH SOUTH NATION CONSERVATION AUTHORITY.