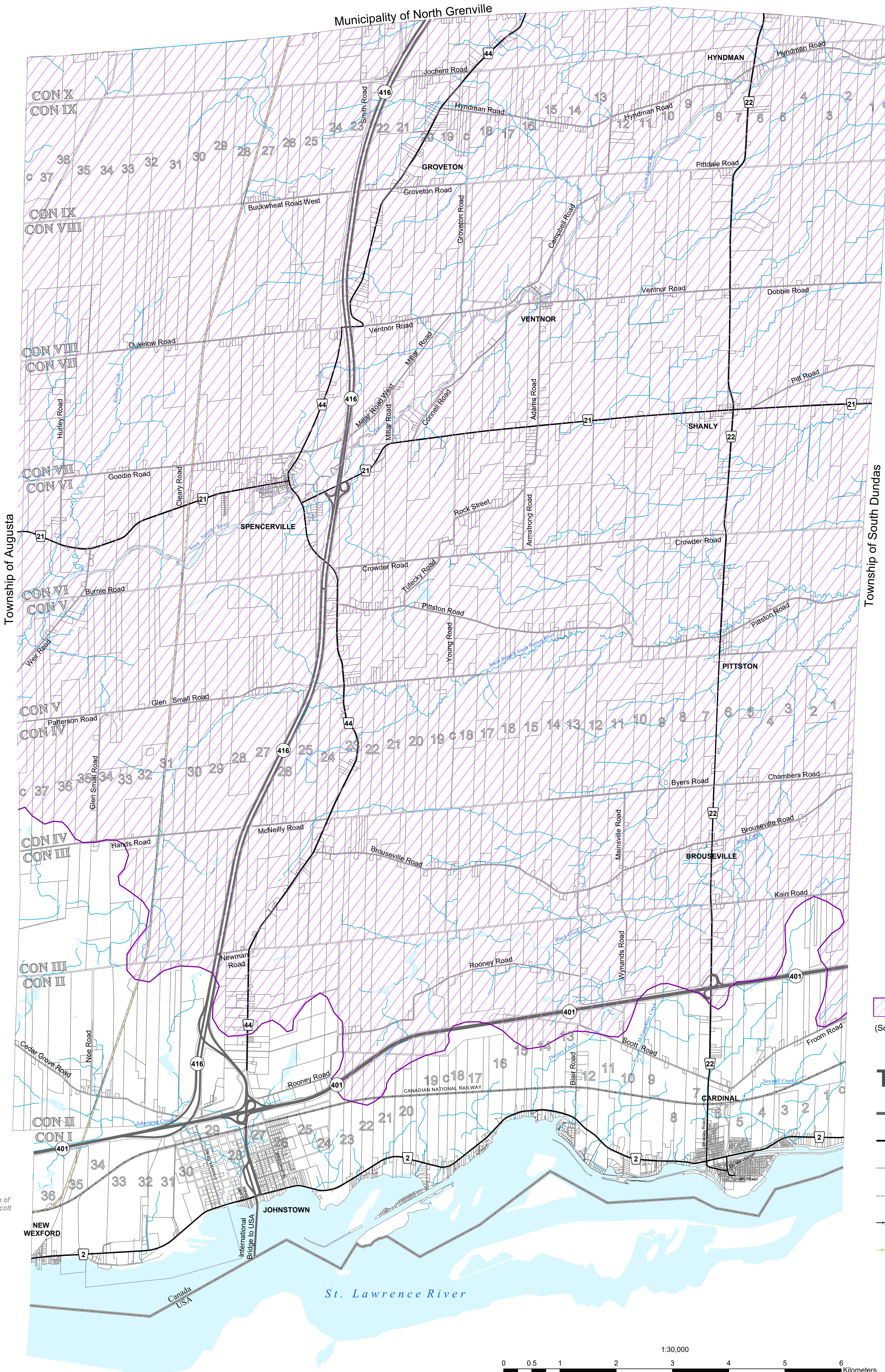
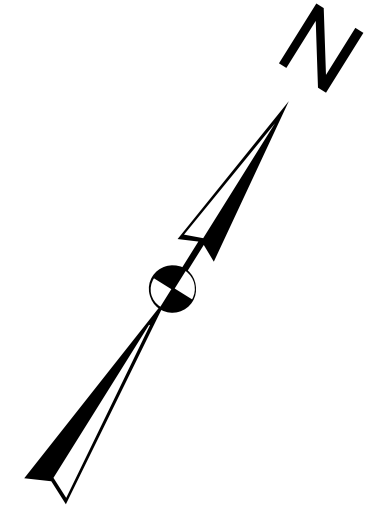

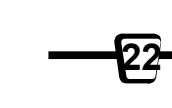

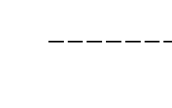
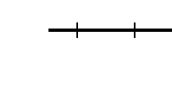



OFFICIAL PLAN
APPENDIX B
Algonquin Traditional
Territory



 Algonquin Traditional Territory
(Source: Algonquins of Ontario Consultation Office)

TRANSPORTATION

-  Provincial Highway
-  County Road
-  Township Road
-  Private Road
-  Active Railway
-  Abandoned Railway

ISSUE DATE: NOVEMBER, 2019



THIS PLAN IS BASED UPON INFORMATION OBTAINED IN JUNE 2018 THROUGH A DIGITAL DATA RELEASE AGREEMENT WITH THE UNITED COUNTIES OF LEEDS & GRENVILLE AND INCLUDES DATA FROM THE PROVINCE OF ONTARIO'S ONTARIO GEOSPATIAL DATA EXCHANGE DATABASE (LAND INFORMATION ONTARIO), MUNICIPAL PROPERTY ASSESSMENT CORPORATION AND TERANET INC. AND ALSO INCLUDES DATA OWNED AND/OR USED UNDER AGREEMENTS WITH SOUTH NATION CONSERVATION AUTHORITY.

1:30,000

