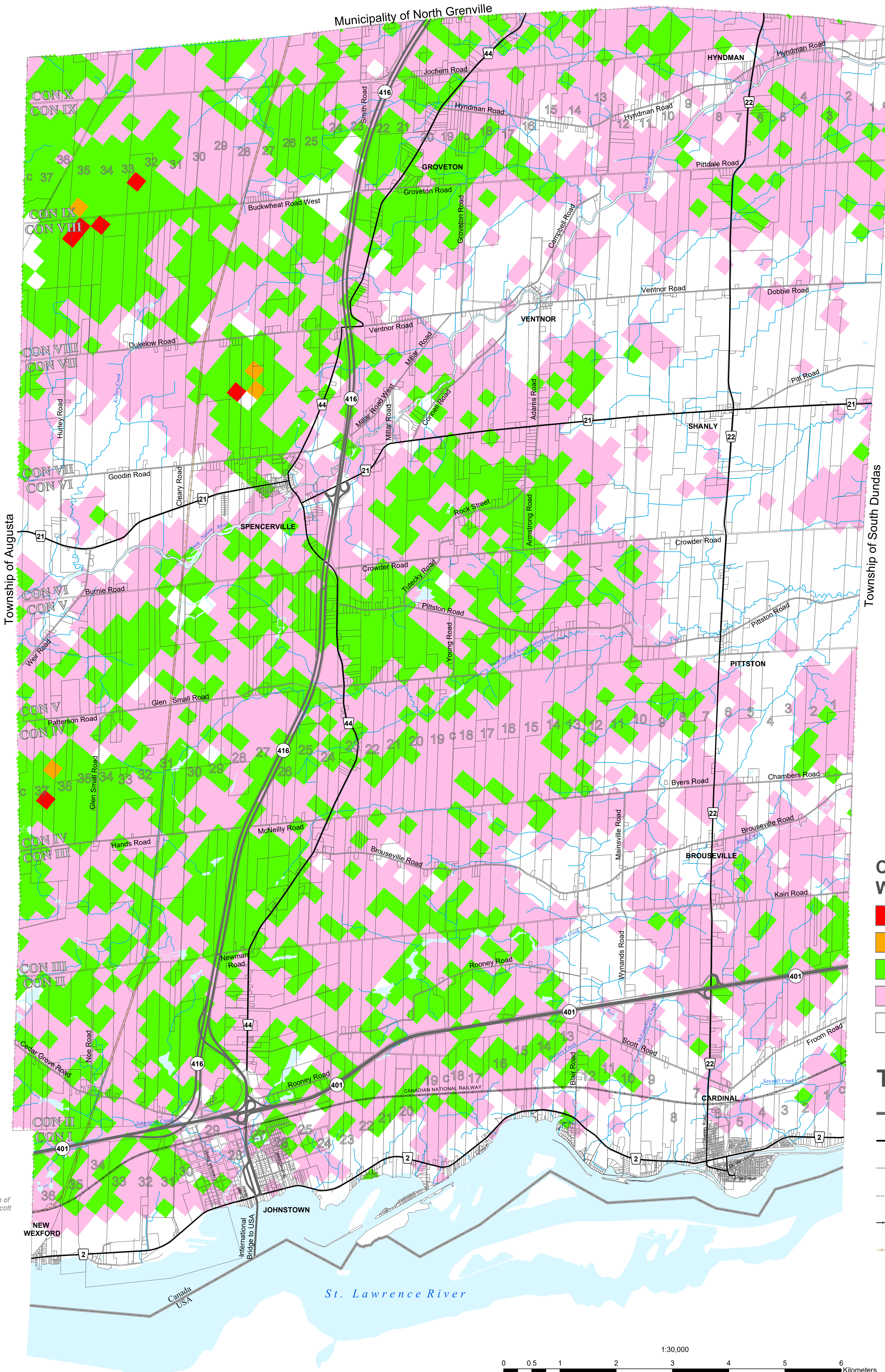
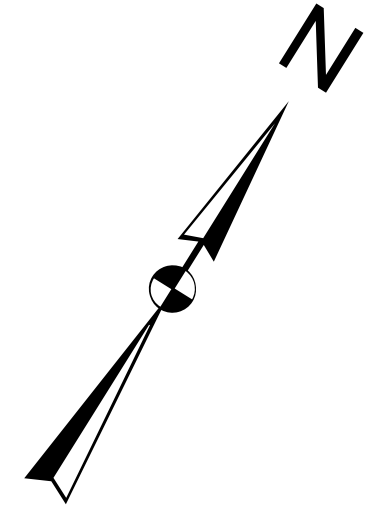


OFFICIAL PLAN
APPENDIX A
Wildland Fire
Hazard Potential



Classification for Potential
Wildland Fires

- Extreme
- High
- Moderate
- Low
- Unclassified

TRANSPORTATION

- Provincial Highway
- County Road
- Township Road
- Private Road
- Active Railway
- Abandoned Railway

Printed: November 18, 2019 - 13:54 pm M:\2018\18070\CAD\Planning\Official Plan\AppendixA.mxd Updated by: W. Stees

ISSUE DATE: NOVEMBER, 2019

 Engineers, Planners & Landscape Architects
 1000 Steeles Ave. East, Suite 100
 Scarborough, Ontario, Canada
 M1V 5P7
 Tel: (416) 291-1111
 Fax: (416) 291-1112
 www.novatech.ca

THIS PLAN IS BASED UPON INFORMATION OBTAINED IN JUNE 2018 THROUGH A DIGITAL DATA RELEASE AGREEMENT WITH THE UNITED COUNTIES OF LEEDS & GRENVILLE AND INCLUDES DATA FROM THE PROVINCE OF ONTARIO'S ONTARIO GEOSPATIAL DATA EXCHANGE DATABASE (LAND INFORMATION ONTARIO), MUNICIPAL PROPERTY ASSESSMENT CORPORATION AND TERANET INC. AND ALSO INCLUDES DATA OWNED AND/OR USED UNDER AGREEMENTS WITH SOUTH NATION CONSERVATION AUTHORITY.

